

AXIAL ATTACHMENTS

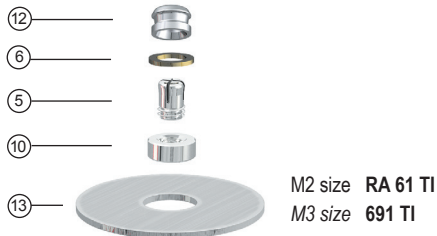
M2: H 3.6 mm - ø 3.4 mm
M3: H 4.0 mm - ø 4.2 mm

CEKA AXIAL CLASSIC

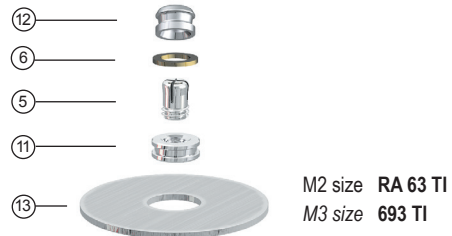
Female for acrylic fixation in the removable prosthesis.
Each package contains 1 attachment. See page 5 for individual components.

MALE ON POST-COPING FOR

(A) Soldering technique with CEKA SOL FILIGRAN



(B) Cast-on technique with precious alloys



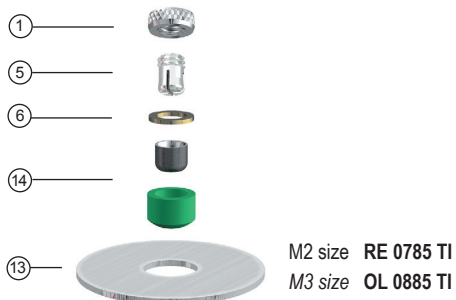
M2: H 3.80 mm - ø 3.4 mm
M3: H 4.34 mm - ø 4.4 mm

CEKA AXIAL REVERSE

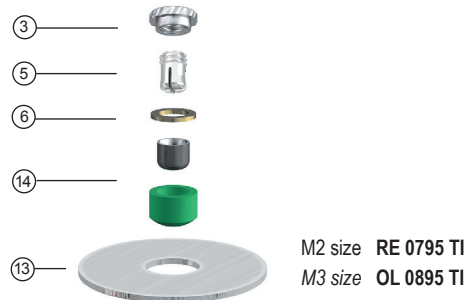
Female for bonding with CEKA SITE in post-copings or in bar constructions (all alloys).
Each package contains 1 attachment. See page 5 for individual components.

MALE FOR

(A) Bonding technique with CEKA SITE



(B) Acrylic fixation technique



CEKA AXIAL OVERSIZED MALE SPRING PINS *



M2 size spring pin (PALLAX alloy)
with larger head (ø 1.95 mm, ø 2.02 mm)
RE 0031 195 red 2 pcs
RE 0031 202 blue 2 pcs



M2 size spring pin (gold-plated PALLAX alloy)
extra long (0.3 mm longer)
RE 0031 L 2 pcs



M3 size spring pin (PALLAX alloy)
extra long (0.3 mm longer)
694 C/L 2 pcs



M3 size spring pin (PALLAX alloy)
with larger head (ø 1.95 mm, ø 2.02 mm, ø 2.09 mm)
694 C / 195 red 2 pcs
694 C / 202 blue 2 pcs
694 C / 209 black 2 pcs



M3 size spacer disc (PALLAX alloy)
to lengthen the spring pin. Use maximum 5 discs.
Also use CEKA BOND.
AF 69 0.05 mm thick 10 pcs

Old spring pins are still available. See separate leaflet BRO-98 on download page: WWW.CKPL.EU.

* See page 23 for table of alloys and materials.

AXIAL ATTACHMENTS

CEKA AXIAL COMPONENTS*

	M2 size: RE 0085 M3 size: 694 AR Retention part for bonding with CEKA SITE. Including duplicating dummy. Do not heat. TITANAX alloy - 2 + 2 pcs		M2 size: RA 0063 M3 size: 693 D Base ring for direct casting with precious alloys. IRAX alloy - 1 pc
	M2 size: RE 0095 M3 size: 694 AKS2 Retention part for circular acrylic fixation. Do not heat. TITANAX alloy - 2 pcs		M2 size: RA 0064 M3 size: 693 DNX Base ring for direct casting with non-precious alloys. Contains Ni. NOPRAX alloy - 1 pc
	M2 size: RE 0031 M3 size: 694 C Male spring pin. Use CEKA BOND to prevent gradual unthreading. PALLAX alloy - 2 pcs + 2 space maintainers		M2 size: RA 0091 M3 size: 691 A Female for retention in acrylic overdentures. Do not heat. TITANAX alloy - 1 pc
	M2 size: RE 0096 M3 size: 694 B Space maintainer of 0.3 mm thickness. STAINLESS STEEL - 10 pcs		M2 size: RA 0055 M3 size: 691 E Large space maintainer for post-copings. For lab use only. TINFOIL - 1 pc
	M2 size: RA 0061 M3 size: 691 D Base ring for soldering with CEKA SOL FILIGRAN. PALLAX alloy - 1 pc		M2 size: RE 0700 TI M3 size: OL 0800 TI Female for bonding with CEKA SITE in post-copings or in bar constructions. TITANAX alloy - 1 + 1 pc

CEKA AXIAL ACCESSORIES M2 AND M3 SIZE

	M2 & M3 size: RE H 5 Laboratory key		M2 & M3 size: P 8 Paralleling mandrel and sandblasting tool for TITANAX females. For lab use only.
	M2 & M3 size: A 1 Activating tool and screw-driver		M2 & M3 size: RE P 2/5 Paralleling mandrel for females. For lab use only.
	M2 & M3 size: RE H 79 Instrument to deactivate spring pins. Only for use outside the oral cavity.		M2 & M3 size: RE H 20 Diamond burr for the bonding technique. For lab use only. 2 pcs
	M2 & M3 size: H 30 Set of 4 profiles to indicate the diameter of the females	CEKA SITE CEKA BOND See page 21.	

CEKA AXIAL ACCESSORIES M2 OR M3 SIZE

	M2 size: RE P 7 M3 size: P 7 Paralleling mandrel for green female keepers. For lab use only.		M2 size: RE H 17 2 pcs M3 size: H 17 2 pcs Protection cap in TITANAX alloy for threading into the base ring. Do not heat.
	M2 size: RE P 4 M3 size: P 4 Paralleling mandrel for axial base rings. For lab use only.		M2 size: RE H 1 2 pcs M3 size: H 1 2 pcs Dummy spring pin with incorporated space maintainer. For lab use only.
	M2 size: RE H 2 2 pcs M3 size: H 2 2 pcs Impression tool for axial attachments, to be used with the (RE) H 14		M2 size: RE H 4 2 pcs M3 size: H 4 2 pcs Soldering accessory for axial base rings. For lab use only.
	M2 size: RE H 14 2 + 2 pcs M3 size: H 14 2 + 2 pcs Model analogue to combine with the (RE) H 2 or to be used with the spring pin, the space maintainer and the (RE) H 13		M2 size: RE H 13 2 + 2 pcs M3 size: H 13 2 + 2 pcs Female analogue for the repair and rebasing technique. For lab use only.

* See page 23 for table of alloys and materials.

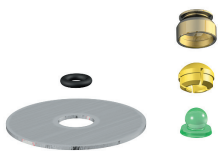
AXIAL ATTACHMENTS

H 3.4 mm - 4.1 mm
 ø 3.55 mm - 4 mm

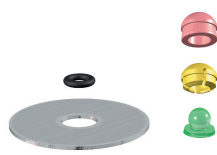
PRECI-CLIX AXIAL

Axial ball attachment for acrylic resin overdentures with replaceable plastic female in three retention levels.

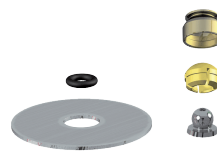
The female can be incorporated into acrylic resin or directly into the framework. The male can either be threaded, cast-on with a precious alloy, or cast in any hard alloy.



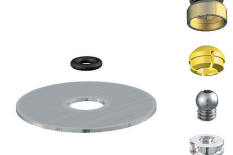
PRECI-CLIX ATI # 1251
 Female housing for incorporation into acrylic resin.
 Plastic male for incorporation into post-copings.
 Cast in any hard alloy.



PRECI-CLIX AP # 1252
 Female duplicating dummy for cast metal partial frames.
 Plastic male for incorporation into post-copings.
 Cast in any hard alloy.



PRECI-CLIX CC # 1256
 Female housing for incorporation into acrylic resin.
 High-fusing male for cast-on technique with precious alloys.

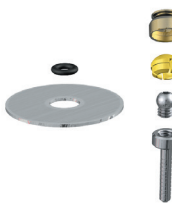


PRECI-CLIX CV # 1261
 Female housing for incorporation into acrylic resin.
 Removable titanium male with high-fusing base ring for cast-on technique with precious alloys.

PRECI-CLIX RADICULAR

Chairside ball attachment for acrylic resin overdentures with replaceable plastic female in three retention levels. The female can be incorporated into acrylic resin or directly into the framework.

The titanium post is available in two versions: with removable male or with the spherical male in one piece. See page 7 for individual components.



PRECI-CLIX RTI # 1291
 Female housing for incorporation into acrylic resin.
 Cementable titanium post with removable titanium male.



PRECI-CLIX RP # 1292
 Replaceable plastic female and duplicating dummy for cast metal partial frames.
 Cementable titanium post with removable titanium male.



PRECI-CLIX RCT # 1293
 Female housing for incorporation into acrylic resin.
 Cementable titanium post with titanium male.



PRECI-CLIX RCP # 1294
 Replaceable plastic female and duplicating dummy for cast metal partial frames.
 Cementable titanium post with titanium male.



PRECI-CLIX DENTIST KIT # 1299
 Contains 2 radicular PRECI-CLIX RTI ball attachments, all necessary accessories and spare parts.

Set:
 2 x 1291 radicular PRECI-CLIX RTI ball attachments
 1 x 1226 set of 3 reamers
 1 x 1222 insertion tool
 1 x IMP-XS-042 screw-driver
 1 x RE H 2 impression tool (2 pcs)
 1 x RE H 14 model analogue (2 pcs)
 1 x 1234 replacement females (3 x 2 pcs)
 1 x CEKA BOND anaerobic adhesive to prevent gradual unthreading of the male part



PRECI-CLIX RC DENTIST KIT # 1297
 Contains 2 radicular PRECI-CLIX RCT ball attachments, all necessary accessories and spare parts.

Set:
 2 x 1293 radicular PRECI-CLIX RCT ball attachments
 1 x 1226 set of 3 reamers
 1 x 1222 insertion tool
 1 x 1201 D male analogue
 1 x 1234 replacement females (3 x 2 pcs)

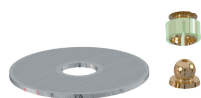
* See page 23 for table of alloys and materials.

AXIAL ATTACHMENTS

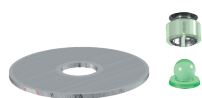
H 3.55 mm - 4.35 mm
 ø 3.5 mm

PRECI-BALL

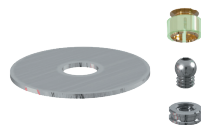
Resilient adjustable ball attachment. The 2.25 mm ball diameter makes PRECI-BALL compatible with most implant systems. The male can be soldered, threaded or cast. The female is available in gold alloy or titanium.



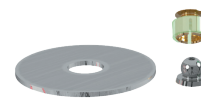
PRECI-BALL OR/OR
1201
 Gold female for acrylic fixation and gold male for soldering with CEKA SOL FILIGRAN to the post-coping



PRECI-BALL PC
1205
 Titanium female for acrylic fixation and burn-out plastic male for casting



PRECI-BALL CV
1206
 Gold female for acrylic fixation and removable titanium male with high-fusing base ring for direct casting with precious alloys



PRECI-BALL OR/IR
1209
 Gold female for acrylic fixation and high-fusing male for direct casting with precious alloys

PRECI-BALL/CLIX - INDIVIDUAL COMPONENTS* & ACCESSORIES



PRECI-BALL FEMALE
 Female in TITANAX (do not heat) or in ORAX alloy for acrylic fixation.
 Height: 2.8 mm - ø 3 mm

# 1201 A	ORAX ALLOY	1 pc
# 1201 AB	ORAX ALLOY	20 pcs
# 1201 B	processing ring	1 pc
# 1205 A	TITANAX ALLOY	1 pc
# 1205 AB	TITANAX ALLOY	20 pcs



PRECI-BALL/CLIX SPACE MAINTAINER
 Large space maintainer for post-copings.
 For lab use only.
 TINFOIL - Thickness: 0.4 mm

# RA 0055	1 pc
-----------	------



PRECI-CLIX HOUSING
 Female housing in an anodized titanium alloy for fixation in acrylic resin dentures. Do not heat.
 Height: 2.65 mm - ø 4 mm

# 1235	6 pcs
# 1235B	50 pcs



PRECI-CLIX FEMALE
 Polyacetal - Height: 2.65 mm - ø 3.55 mm
 Normal retention:

# 1231	yellow	6 pcs
# 1231B	yellow	50 pcs

Reduced retention:

# 1232	white	6 pcs
# 1232B	white	50 pcs

Increased retention:

# 1233	red	6 pcs
# 1233B	red	50 pcs

Combination package:

# 1234	2 + 2 + 2 pcs
--------	---------------



PRECI-CLIX FEMALE SET
 Set of PRECI-CLIX females to be used on all 2.25 mm ball males, including implant abutments.
 Set includes 2 females assembled in housing

# 1242	2 sets
--------	--------



PRECI-CLIX DUPLICATING DUMMY
 Plastic duplicating dummy for cast metal partial frames.
 No need for a space maintainer! For lab use only.
 Height: 2.8 mm - ø 3.55 mm

# 1236	6 pcs
# 1236B	50 pcs



PRECI-CLIX SPACE MAINTAINER
 Elastic space maintainer, to be placed between male and female during processing.
 Rubber - Height: 0.7 mm - ø 1.8 mm

# 1251 B	6 pcs
----------	-------



PRECI-BALL/CLIX MALE
 Spherical male in ORAX alloy (yellow) for soldering with CEKA SOL FILIGRAN or IRAX alloy (white) for direct casting with precious alloys.
 Height: 2.43 mm - ø 2.25 mm - ø base: 3.2 mm

# 1201 C	ORAX ALLOY	1 pc
# 1209 C	IRAX ALLOY	1 pc



PRECI-BALL/CLIX MALE PA
 Spherical burn-out plastic male for incorporation into post-copings and for casting. For lab use only.
 Height: 2.4 mm - ø 2.25 mm - ø base: 3.2 mm

# 1205 C	1 pc
# 1205 CB	50 pcs



PRECI-BALL/CLIX MALE V AND V LONG
 Spherical, removable male in TITANAX alloy for incorporation into an M2 base ring on post-copings.
 Do not heat.
 Height male V: 3.05 mm, male V long: 3.35 mm
 ø 2.25 mm - Threads: M2 - Internal hex: 0.9 mm

# 1206 C	1 pc
# 1206 CL	0.3 mm extra long 1 pc



PRECI-BALL/CLIX BASE RING
 M2 base ring in the high-fusing IRAX or NOPRAX (contains Ni) alloy to incorporate the 1206 C PRECI-CLIX male V. For direct casting or for soldering.
 Height: 1.3 mm - ø 3.4 mm - Threads: M2

# RA 0063	IRAX ALLOY	1 pc
# RA 0064	NOPRAX ALLOY	1 pc



PRECI-CLIX POST
 Cementable post in TITANAX alloy with threaded base for the 1206 C PRECI-CLIX male V or with attached ball.
 Do not heat.
 Post length: 7 mm (may be reduced) - ø 1.35 mm
 ø base: 3.4 mm - Threads: M2 - ø ball: 2.25 mm

# 1291 C	with threading	1 pc
# 1293 C	with male part	1 pc



PRECI-CLIX R BURR SET
 Set of 3 calibrated burs for right angle.
 Used for root preparation prior to cementation of the PRECI-CLIX post.

# 1226	Set: 1 predrilling burr, 1 cavity burr, 1 precision reamer
# 1227	1 predrilling burr
# 1228	1 cavity burr
# 1229	1 precision reamer

* See page 23 for table of alloys and materials.